



NEWSLETTER NO. 01-2018

## CLARITY launched myclimateservices.eu Stay connected with the latest climate services



Myclimateservices.eu is the outbound service of the CLARITY project. It aims to build up and service a vivid community interested in climate change adaptation. Besides geo-science experts we invite urban- and spatial planners, architects, engineers, project managers from construction, transport, energy, environment industries as well as people from the financial sector. Weekly editorials and the climate services marketplace provide information and access to data, tools and experts and gives a floor to adaptation projects.

More on [myclimateservice.eu](http://myclimateservice.eu) [instagram@myclimateservices](https://www.instagram.com/myclimateservices) [twitter@MyClimateServc](https://twitter.com/MyClimateServc)



Naples is not yet considering climate change in urban planning sufficiently.



Being surrounded by water, Stockholm needs a refined climate hazard strategy.



ZAMG meteorologists predict increasing heat waves for the city of Linz.



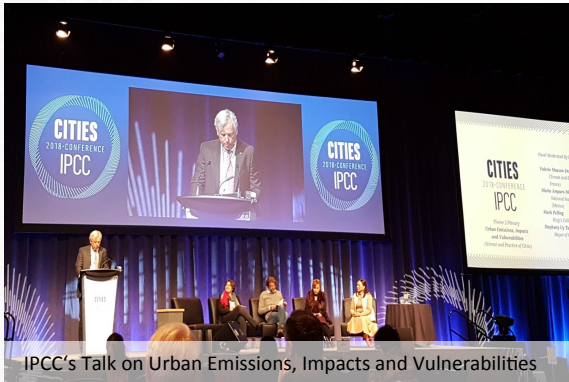
By 2050 climate change will cause severe problems for the Spanish Infrastructure.







## Presenting the CLARITY methodology for IPCC's "Cities and Climate Change Science Conference" 5-7th March 2018, Edmonton, Canada



In its upcoming report the IPCC focuses on cities as they play a critical role in supporting the implementation of the Paris Agreement, the New Urban Agenda and achieving the Sustainable Development Goals. Cities' fast response in adapting to a changing climate and future actions like pursuing low-carbon, climate resilient and sustainable development will shape the future of more than half of the world's population.

Co-organized by a number of international, governmental, urban and scientific organizations the IPCC's "Cities and Climate Change Science Conference" in Edmonton, Canada, was set to assess the most recent scientific understanding of cities and climate change. The CLARITY climate change methodology provides an innovative and helpful approach to solve climate change related problems in urban areas. Hence, in the scope of enabling pathways for urban transformation, CLARITY can contribute to urban resilience under a changing climate.



More on <https://bit.ly/2HNsT1c>

## Presenting the CLARITY demonstration case of Linz, Austria 8-13th April 2018, EGU, Vienna, Austria



As a partner of My Climate Service ZAMG presented the CLARITY process and its implementation for the Linz demonstration case at the European Geosciences Union (EGU) General Assembly. The conference brought together geoscientists from all over the world to a meeting covering all disciplines of the Earth, planetary and space sciences.



More on <https://bit.ly/2KC9jCS>





### “Sustainability in real estate is no longer an option, it is the norm”

13-16th March 2018, MIPIM, Cannes, France



By 2050 it is estimated that 60 percent of the world population will be living in urban areas. Nature is suffering, if not disappearing.

At the MIPIM summit (“Marché International des Professionnels de l’immobilier”) the motto this year was “Mapping World Urbanity”. Topics were sustainability in real estate including mobility, town and city planning, new technology, architecture and design.

More on <https://bit.ly/2HSujn9>



### “Project managers need to understand making investments resilient to climate change”

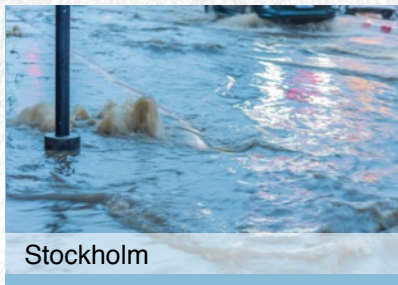
10-12th April 2018, Norrköping, Sweden

At the SMHI office Clarity partners presented in three days an overview and the status quo of their tasks. Also, the upcoming CSIS and Marketplace were discussed and developed. “We will create a powerful tool by integrating data with this workflow”, Pascal Dihe from CISmet explains. More on <https://bit.ly/2HSujn9>



Jönköping

A developed city struggles with flooding



Stockholm

Increasing water hazards



The Green Area Factor

Supporting urban planners in Sweden







### Infrastructure suffers from climate change – rescuing the Spanish transportation network



We can expect these climate changes:

- The temperature will increase about 2 °C in summer and 1.2 °C in winter
- The relative humidity will generally diminish by 5%.
- The number of frost days will be reduced.
- The daily thermal oscillation will be broader.
- Annual accumulated precipitation will decrease in all regions: about 5% in the North and in the East, and around 10% in the South and in the West.

More on [www.clarity-h2020.eu](http://www.clarity-h2020.eu)

CLARITY measures and predicts climate change hazards for urban projects

The ground transportation network in Spain is generally not adapted to the forthcoming impacts due to climate change, the road conditions are highly sensitive to the evolution of the maximum and minimum temperatures. CLARITY is working with key stakeholders of Spanish companies as Acciona to provide essential information and strategies to face this problem. More on <https://bit.ly/2KvNmFn>



### Integrating Climate Change in Urban Planning in Naples

#### The CLARITY methodology



Sometimes a cool water fountain is just not enough

Naples has to cope with unbearable heat waves. Now, the city wants to do more climate adaptive planning. In order to do so, the requirements for urban regeneration, new construction and retrofitting in highly densely populated areas need to be evaluated by integrating inevitable constraints. CLARITY has a step-by-step methodology which aims to realise all of the above. More on <https://bit.ly/2ld0ml3>







Clarity's reporters do not only report on European cities – they bring stories from all over the world Brazil, February 2018



Brazil's Salvador has always been a hot city – but rain days became much more in the last decade. Salvador has no seasons as in Europe, there is only wet and dry season. But it is not dry anymore, climate has been changing noticeably for the past decade. Several neighbourhoods get overflowed.



### Climate-change hazards increase

“Most of the climate change-related provisions come from state intervention [...] There is not a lack of money - it is a lack of vision. [...]

The Amazon rainforest isn't just up there to show, but they will only realise its beauty when there's nothing but a sun-baked desert in its place”, says Lina Moraes, working for the Bahian Government.

## The city made of sugar

Climate has been changing noticeably for the past decade. The average temperature is 30°C, there are 174 rain-days, statistics say. Summers become warmer and winters become less 'cold' – instead the rain seasons got more and more intense in the past few years, and it's not uncommon for several neighbourhoods in Salvador to be severely flooded during the winter-rain-season.

Infrastructure cannot stand the amount of water. Streets have huge holes, constructions are in every part of the city. “Sometimes it feels like Salvador is made of sugar because when it rains everything just flows away, it feels like the whole city melts.” After some hours the rain stops - leaving big rivers in the streets, the drains cannot absorb the huge amount of water.

“Constructions are tried to get fixed. But it is still surprising how little they adapt to the rain”, says Lina Moraes. Salvador will get progressively warmer, something that will promote dire changes in the overall weather of the whole region. *More on <https://bit.ly/2rkcl6P>*







### ABOUT OUR PROJECT

CLARITY is focused on the development, operation and dissemination of a digital marketplace providing services, contents, features and tools for the climate change impact assessment, which have been developed on the base of scientific data and meet the new European standards and regulations.

#### FACTS

Duration: 3 years

Participants: 17 companies & organisations

Geographical areas:

\* Step 1: Austria, Spain, Sweden and Italy

\* Step 2: rest of Europe



### OUR APPROACH

CLARITY will allow end-users to explore resiliency through alternative planning and adaption scenarios considering:

1. variable local context
2. expert-based climate intelligence
3. customized risk analysis
4. varying impact scenarios
5. flexible adaption and alternative options
6. integration of data and model results into action plans

**For more details about the EU-GL method please check:**

<http://climate-adapt.eea.europa.eu/metadata/guidances/non-paper-guidelines-for-project-managers-making-vulnerable-investments-climate-resilient/guidelines-for-project-managers.pdf>

### THE CONSORTIUM



This project has received funding from the European Union's Horizon 2020 research and innovation programme under grant agreement No 730355.